

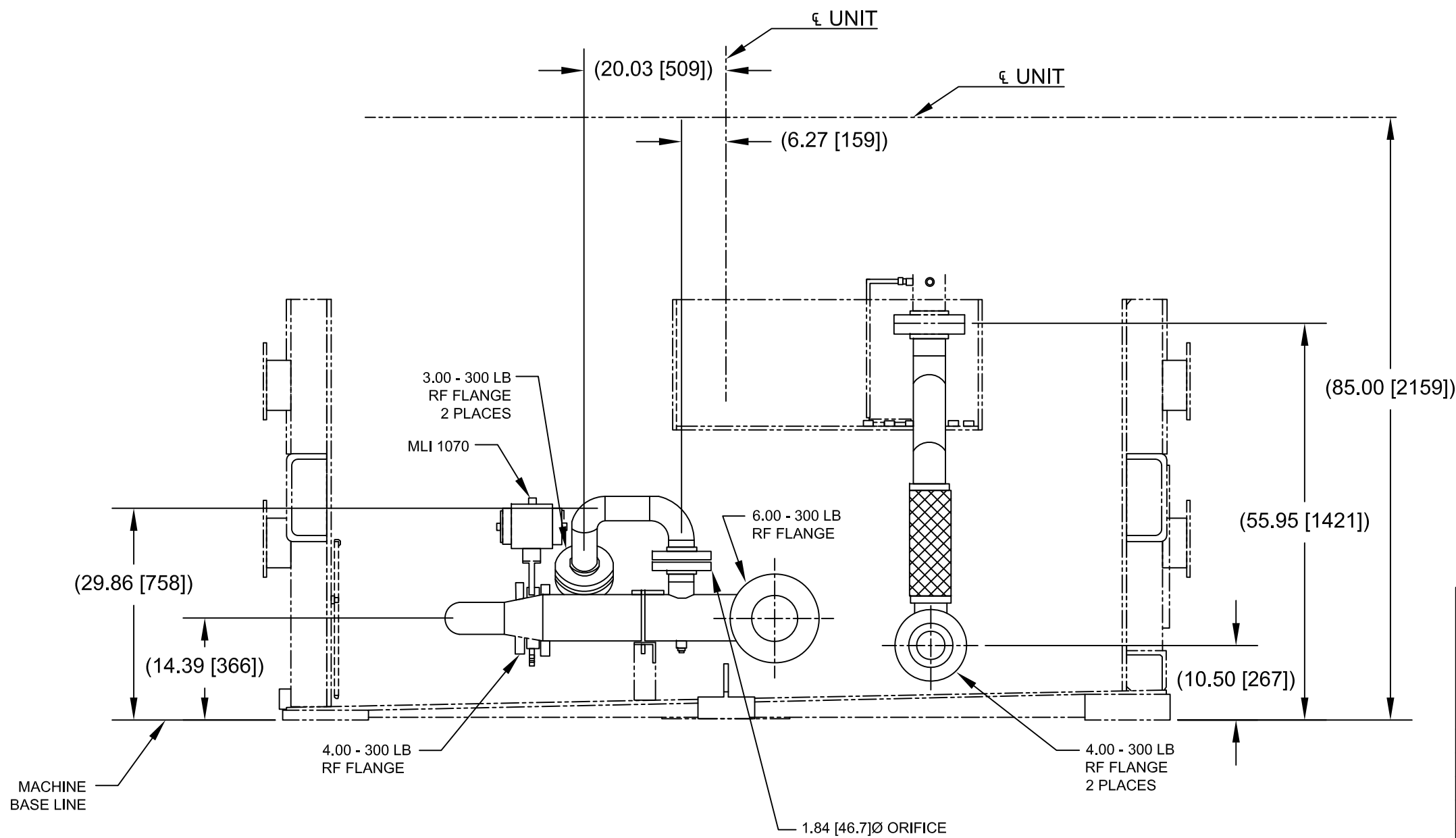
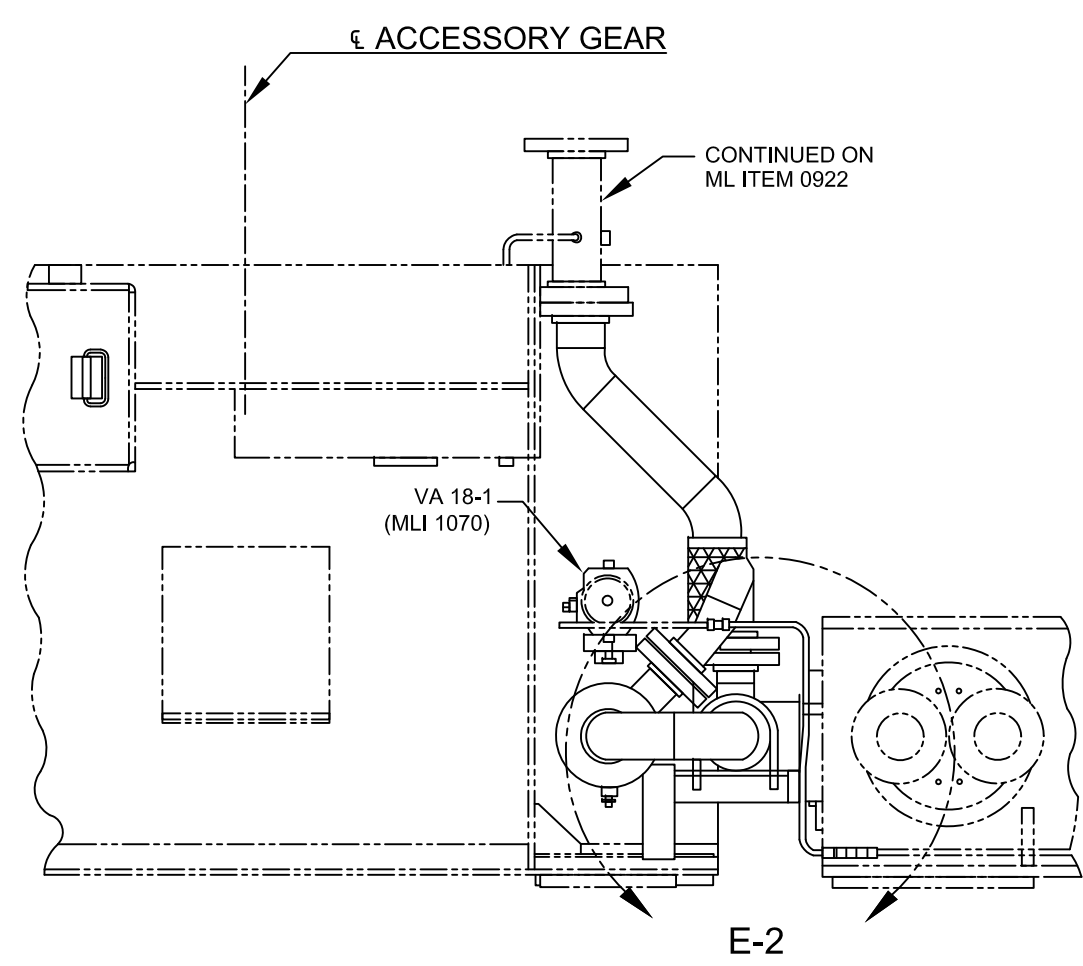
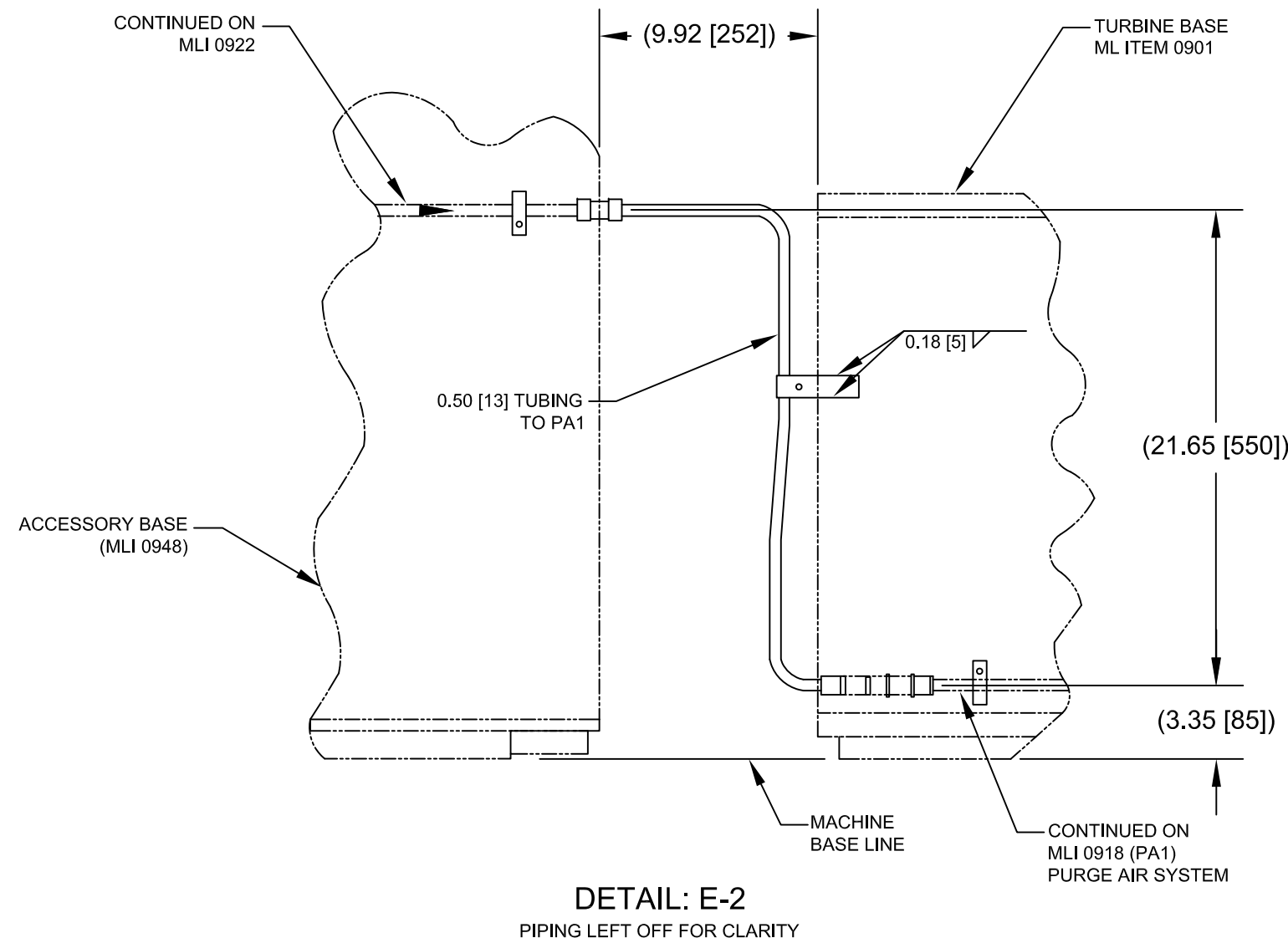
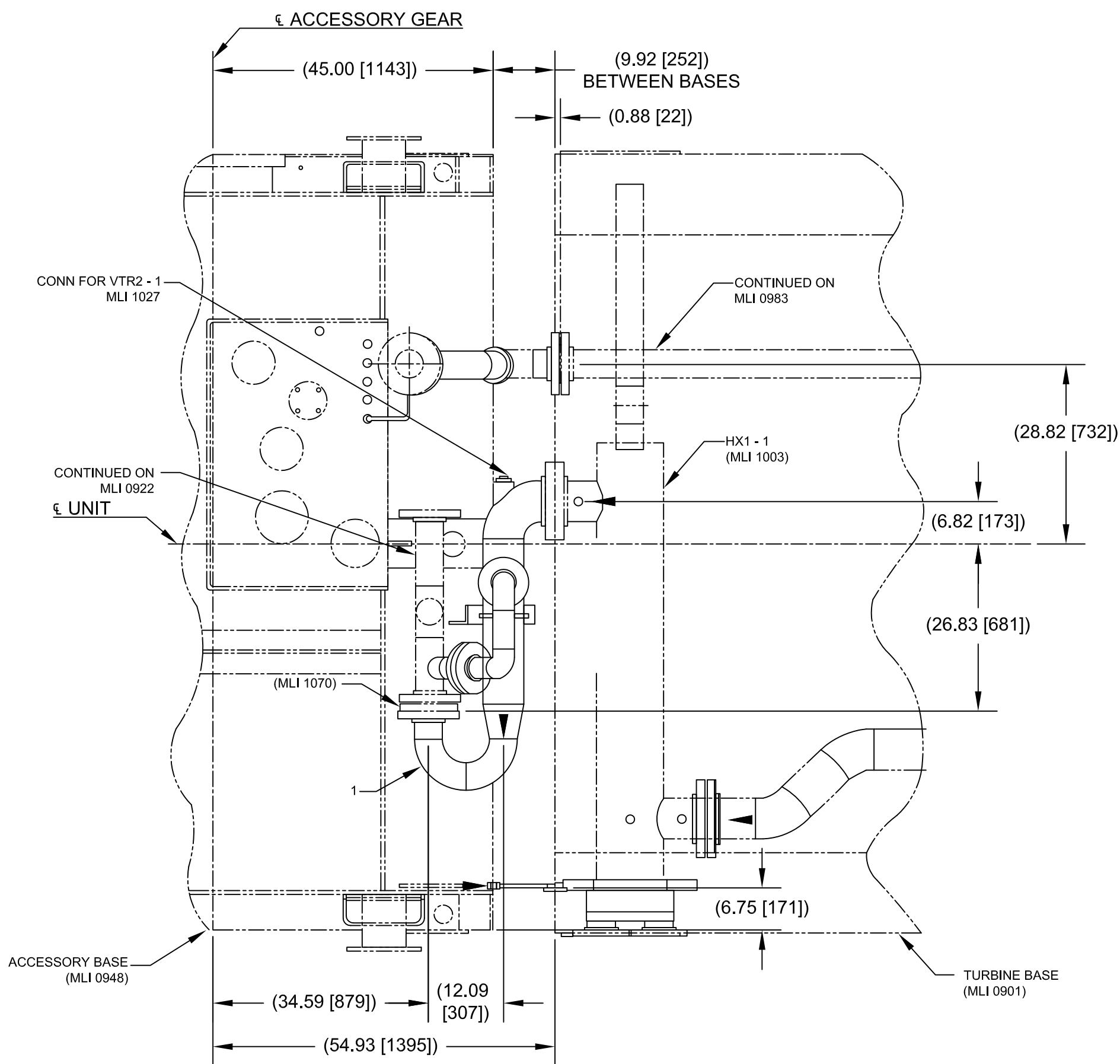
LINIA DE CORTE DE ORIGINAL
LINIA DE CORTE DE COPIA

AGM-02-0204-PLA-M-0029
N° PLANO:

NOTES :

1. GENERAL MACHINING APPLIED PRACTICES ARE PER 348A9200
2. PIPING APPLIED PRACTICES ARE PER 351A3700.
3. PIPING WELDS ARE PER P8A-AG3, FIGURE PER. APPENDIX II, FILLER METAL COLUMN AE-L PER APPENDIX I.
4. STRUCTURAL WELDS ARE PER P8A-AG1, FIGURE PER APPENDIX III, FILLER METAL COLUMN AB PER APPENDIX II.
5. TORQUE BOLTS AND STUDS PER 248A4158.
6. CLEAN AND PAINT PER MLI 0108.
7. ALL INTERCONNECTING PIPING TO BE INSTALLED IN A STRAIN FREE CONDITION.
8. ALL DIMENSIONS ARE FOR REFERENCE ONLY, ACTUAL SITE MAY VARY.
9. SYSTEM PARAMETERS AND SPECIFICATIONS ARE BASED ON TYPICAL REQUIREMENTS FOR 7EA DLN 1.0 DUAL FUEL SYSTEMS AND CUSTOMERS SCOPE OF WORK.

IMPORTANTE
ESTE PLANO FUE ELABORADO EN AUTOCAD V.2008
CUALQUIER MODIFICACION REALIZADA EN CAMPO
DEBERA SER NOTIFICADO A LA UNIDAD
RESPONSABLE.
QUEDA PROHIBIDO CORREGIR ESTE PLANO SIN
AUTORIZACION DE ESTA UNIDAD.
ALL DIMENSIONS IN BRACKETS [] ARE
MILLIMETER, EXPRESSED DIMENSIONS
ARE INCHES



| N° DE DOCUMENTO | DESCRIPCION | REV. | FECHA |
|--------------------------|--|------------|-------|
| AGM-02-0204-PLA-M-0031 | ATOMIZING AIR LOWER PIPING ARRANGEMENT | (MLI 0983) | |
| AGM-02-0204-PLA-I-0019 | FUEL NOZZLE PURGE PANEL ASSEMBLY | (MLI 0918) | |
| DOCUMENTOS DE REFERENCIA | | | |

| | | | |
|----------------------------|-------------------------|-----------------|-------------------------------------|
| PROYECTO N°: 409-2956-1 | REV: | ESCALA: NONE | PLANO No: AGM-02-0204-PLA-M-0029 |
| REVISADO: C. Brown | CALCULO: S. Boerckel | FECHA: 06/06/11 | DISK N° |
| DIBUJO: S. Boerckel | REVISADO: J. Castillo | ESC./PLOTEO: | REV. 0 |
| APROBADO: T. Koontz | APROBADO: M. Monticelli | ARCHIVO: | PAGINA: 1 DE: 1 |

| REF. FABRICANTE | FABRICANTE | O/C: |
|-----------------|------------|------|
| | | |

LINIA DE CORTE DE COPIA
LINIA DE CORTE DE ORIGINAL